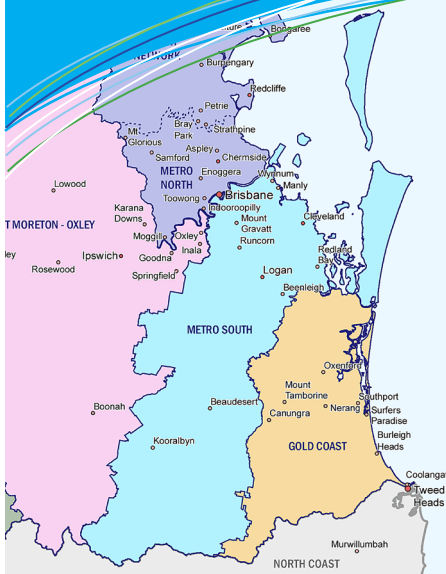


# Local Newsletter



## Greater Metro South Brisbane Medicare Local - Introductory Newsletter - September 30, 2011

The Greater Metro South Brisbane Medicare Local (GMSBML) is one of the first Medicare Locals to be established as part of the Australian Government's national health reform program. Formed on 1 July 2011 GMSBML will work with the local community to drive improvements in primary healthcare and coordinate a wide range of high quality health programs.

**“The Greater Metro South Brisbane Medicare Local encompasses a population of 884,000 people and includes areas previously covered by four divisions of general practice.”**

### Chairperson's message - Dr John Kastrissios

The Greater Metro South Brisbane Medicare Local will work collaboratively with Local Health and Hospital Networks as well as GPs, Nurses, Allied Health Professionals and Indigenous Health Organisations to deliver accessible, high quality health services. The aim of the GMSBML will be to continue to build upon the working partnership with general practice achieved through the existing Divisions of General Practice, and to more closely bring into that partnership other Primary Health Care Providers. Our governance and committee structure will ensure that all partners, including General Practice, have influence in the priorities and directions of the GMSBML.



**“The Greater Metro South Brisbane Medicare Local will work collaboratively... to deliver accessible, high quality health services.”**

By building on our founding Divisions of General Practice partners' established strengths in delivering flexible, responsive and timely services, we hope to become the pre-eminent primary healthcare organisation in our region. More specifically we will improve our local primary health services by working towards the following five strategic objectives:

1. Improve the patient journey through developing integrated and coordinated services;
2. Increase support to clinicians and service providers to improve patient care;
3. Identify local health needs and develop locally focused and responsive services;
4. Increase performance by facilitating the implementation of primary health care initiatives and programs;
5. Strengthen accountability and efficiencies via strong governance and effective management.

Throughout this period of transition and beyond we will remain focused on improving health outcomes and delivering a better healthcare system through an integrated network of services.

## GMSBML - Board of Directors

Greater Metro South Brisbane Medicare Local's Board of nine Directors brings together the necessary vision and knowledge to establish our organisation's governance and strategic direction. Collectively, the Board has a wealth of experience and holds an extensive range of industry and professional skills which will ensure Greater Metro South Brisbane Medicare Local's development.

---

### GMSBML Chairperson - Dr John Kastrissios

Dr John Kastrissios is a General Practitioner Principal in a group general practice, and he is a long standing Board Director of SouthEast Primary HealthCare Network (SPHN) and General Practice Queensland. John is a Graduate of the Australian Institute of Company Directors, with skills and experience in effective governance, health policy development, advocacy to government and clinical leadership. He is also a member of the National e-Health Transition Authority Clinical Leads, a member of the Queensland Health Clinical Informatics Steering Committee and Clinical Ethics Committee and a Clinical Director at the University of Queensland Health Care GP super clinic.



### GMSBML Deputy Chair - Dr Ian Williams

Dr Ian Williams is the founding Principal of a group general practice. During his twenty five year tenure, the centre has grown from a solo practice to one which currently employs 18 doctors. Ian is also President, South East Alliance of General Practice and holds medical advisory positions with Diabetes Australia (QLD) and the Queensland Health Statewide Falls Prevention Committee. In addition, Ian is a Senior Lecturer at the University of Queensland's School of Medicine.

---



### Mrs Patrice Cafferky

Mrs Patrice Cafferky began her career as a General Nurse before training to become a Midwife. She and her husband then established a medical practice and as Practice Manager and Practice Nurse, she has helped to develop the business into a large centre. Patrice is a Graduate of the Australian Institute of Company Directors and has extensive governance experience. She also holds post graduate Bachelors and Certificates in Nursing and Management. She is the Board Chair of SouthEast Primary HealthCare Network (SPHN), a member of General Practice Queensland's Chairs Leadership Connection and also a member of General Practice Queensland's Clinical Governance Sub-Committee. Patrice also maintains active membership within the Australian Association of Practice Managers and Australian Practice Nurses Association.



### Finance and Audit Sub-Committee Chair – Mr Graham Carpenter

Mr Graham Carpenter is a Chartered Accountant and brings extensive financial management, strategy development and governance experience. As a Partner in accountancy practices, Graham provided a wide range of financial management and audit services including assignments for Queensland Health. He was also Northern Territory Auditor-General and has held senior positions within the Victorian and Queensland Treasuries with responsibilities for health and community services.

---



## GMSBML Board of Directors (continued)

### Mrs Cheryl Herbert

Mrs Cheryl Herbert is founding Chief Executive Officer, Health Quality and Complaints Commission. Prior to this, she spent ten years as Chief Executive Officer of Spiritus Care Services, which she transformed into one of Queensland's largest not for profit community service organisations. As a Registered Nurse and Midwife, Cheryl has worked in community, aged care and acute settings as well as in academic and management positions. Cheryl is an Adjunct Associate Professor of the Faculty of Health Sciences at the University of Queensland and is a member of various boards and committees, including a Board Director at SPHN.



of Management at Griffith University Business School and an Adjunct Professor of the School of Medicine at the University of Queensland. Other roles include Directorships of Mater Medical Research Institute, Queensland Children's Medical Research Institute, the Health Round Table, Mater Appeals Ltd. (Mater Foundation) and Chair of Mercy Super.

### Professor Cindy Shannon

Professor Cindy Shannon is Director of the Centre for Indigenous Health at the University of Queensland, Academic Director at the Institute for Urban Indigenous Health, and has over 20 years' experience of Aboriginal and Torres Strait Islander affairs, the last 15 specialising in health. Cindy has an ongoing affiliation with Queensland Aboriginal and Islander Health Council and is a member of the Ministerial Council on AIDS, Sexual Health and Hepatitis and of the National Health and Medical Research Council. She is also Director of the Queensland Centre for Rural and Remote Mental Health and of the Abused Child Trust. Cindy is a descendant of the Ngugi people from Moreton Island.



### Governance Sub-Committee Chair – Mr Eugene McAteer

Mr Eugene McAteer is a graduate of AICD and currently holds Director positions at Metro North Health Service District (Sub Acute Services), Queensland Health and Inala Primary Care. He is also a Board Director of South East Alliance of General Practice. With more than twenty years' experience working in Australia and UK across health policy development and services delivery, Eugene has in-depth strategic and operational experience and recognises the importance of collaborative working relationships in improving health outcomes.



### Professor Andrew Wilson

Professor Andrew Wilson is Executive Dean of the Faculty of Health at Queensland University of Technology. Previously he spent four years as Deputy Director General, Policy, Strategy and Resourcing at Queensland Health. Prior to this, he was Deputy Executive Dean and Professor of Public Health, Faculty of Health Sciences at the University of Queensland. He has also been Chief Health Officer and Deputy Director-General, Public Health in New South Wales Health. Andrew has specialist qualifications in clinical medicine and public health and has a PhD in epidemiology.



### Dr John O'Donnell

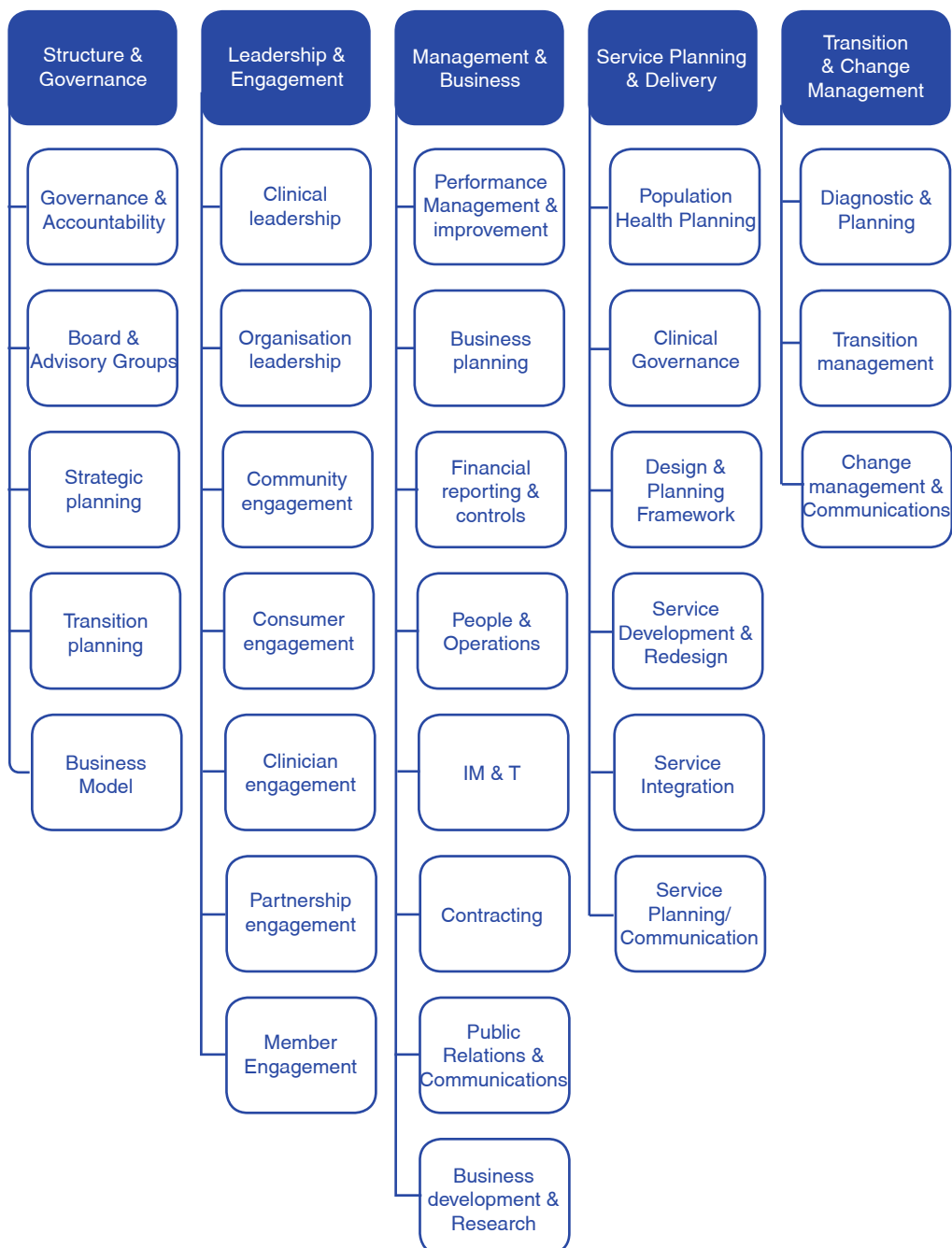
Dr John O'Donnell has been Chief Executive Officer of Mater Health Services since November 2001. He has a Masters in Health Planning and Fellowships of the Australian Institute of Management and the Australian Institute of Company Directors. John is an Honorary Professor of the Department



## Framework for Transition

The needs of organisations during times of transition or significant change, are different to the needs of organisations during business-as-usual. Perhaps the most important difference between the development needs of mature organisations and the capabilities important during transition, is the ability to robustly manage and govern

the transition itself. The GMSBML approach to transition capability mapping draws from DOHA's evaluation criteria and objectives for Medicare Locals, as well as leading practice in organisational transition capabilities to develop the framework set out below.





## Staff Announcements

Greater Metro South Brisbane Medicare Local recently announced the appointment of Mr Tam Shepherd to the position of CEO of the GMSBML. Tam has a long background in large transformation public and private sector programs in New Zealand and Australia. Tam was until recently an Executive Director within Queensland Health's Information Division and was involved in building closer connections between primary care providers and Queensland health via the electronic referrals and discharge systems.

Tam has a background in law and political science and brings to this new role deep public and private sector expertise in New Zealand as a Manager in the welfare portfolio, in Australia as the head of the eHealth Branch of the Commonwealth Department of Health and Ageing and as former lead consultant with CISCO's Internet Business Solutions Group Australia and New Zealand.

The board is delighted to welcome Tam to his new role and is looking forward to working with him to achieve our shared vision of delivering improved access to high quality primary health care services for the people of the Greater Metro South Brisbane Medicare Local region.

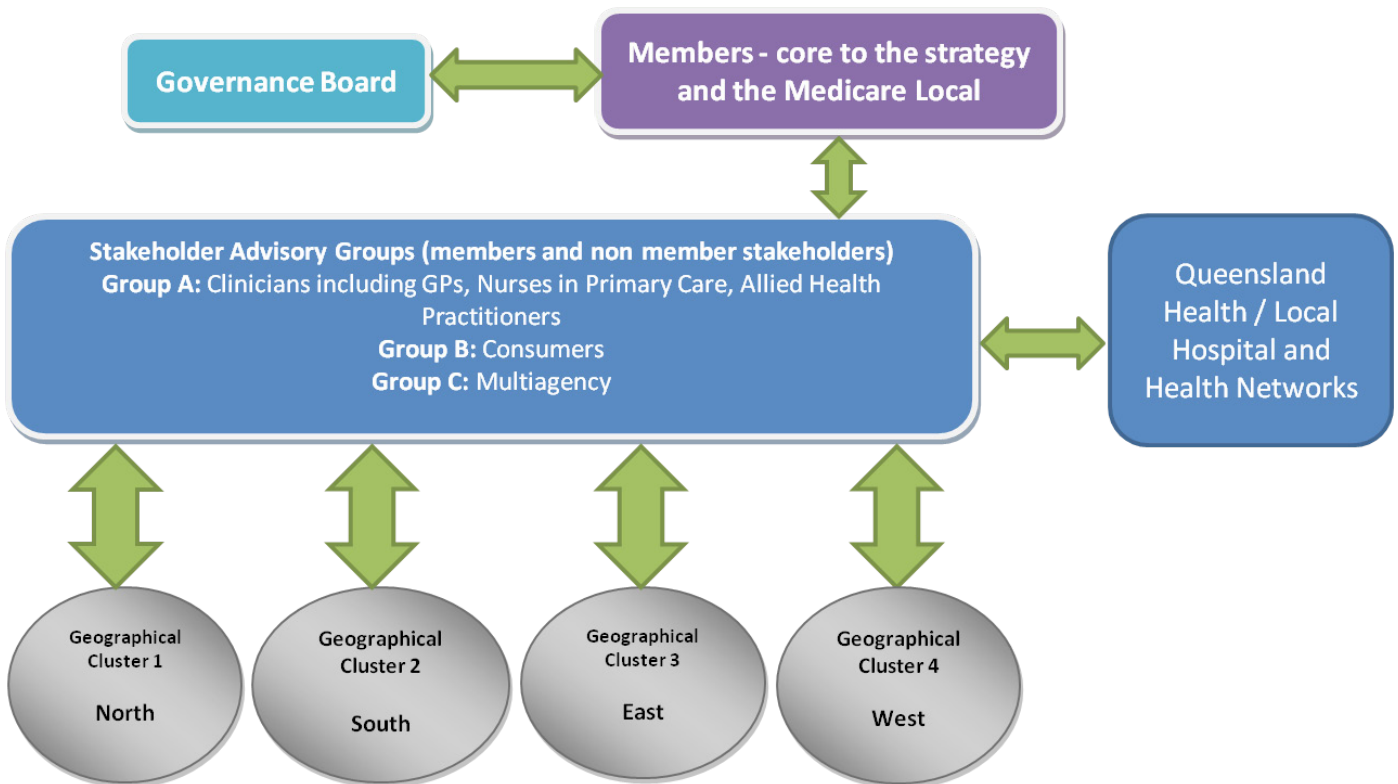
GMSBML board also wishes to acknowledge the significant contribution that Ms Gaylene Coulton has made to the development of our new organisation in her role as Transition Executive Director. Gaylene has made a decision to pursue further opportunities in the sector and the board thanks her for her dedication and commitment to primary health care reform. Lastly the board would also like to sincerely thank the staff from both the founding Divisions of General Practice (SEAGP and SPHN) who have worked tirelessly over the past many months to achieve a harmonious transition to the GMSBML.

## Member Organisations

The founding members comprise a wide range of organisations encompassing local service providers, workforce bodies, aged care providers, health research groups and others. Over time GMSBML membership will be extended to include groups who further represent the community views and needs. Our current members include:

- Aged Care Queensland;
- Allied Health Professions Australia;
- Australian Association of Practice Managers;
- Australian Practice Nurses Association;
- Central and South Queensland Training Consortium;
- Council on the Ageing Queensland;
- Ethnic Communities Council of Queensland;
- Health & Community Services Workforce Council;
- Institute for Urban Indigenous Health;
- Mater Health Services;
- Pharmaceutical Guild of Australia Qld Branch;
- Pharmaceutical Society of Australia Queensland Branch;
- Private Hospitals Association Queensland;
- Queensland Alliance of Mental Health;
- The Royal Australian College of General Practitioners;
- South East Alliance of General Practice;
- SouthEast Primary HealthCare Network;
- University of Queensland.

## Stakeholder Engagement Model



### Initially, the GMSBML will work to:

- Establish a model of service delivery with regional clusters to meet the needs of local populations;
- Improve existing health information directories;
- Enhance cultural awareness and safety programs to engage Aboriginal and Torres Strait Islander people and support their access to primary health care services;
- Develop partnerships between primary health care services and the Local Health and Hospital Network;
- Undertake shared planning and delivery of services with partner organisations
- Implement education and training plans to promote best practice across the primary health care sector;
- Work in partnership to map existing population health issues and provide analysis for local needs

### For further information:

Please email [ceo@gmsbml.org.au](mailto:ceo@gmsbml.org.au) or telephone 3442 1428 or visit the website:

[www.gmsbml.org.au](http://www.gmsbml.org.au)